



DNC-MAX

DNC Communication
for CNCs, Robots, PLCs and more

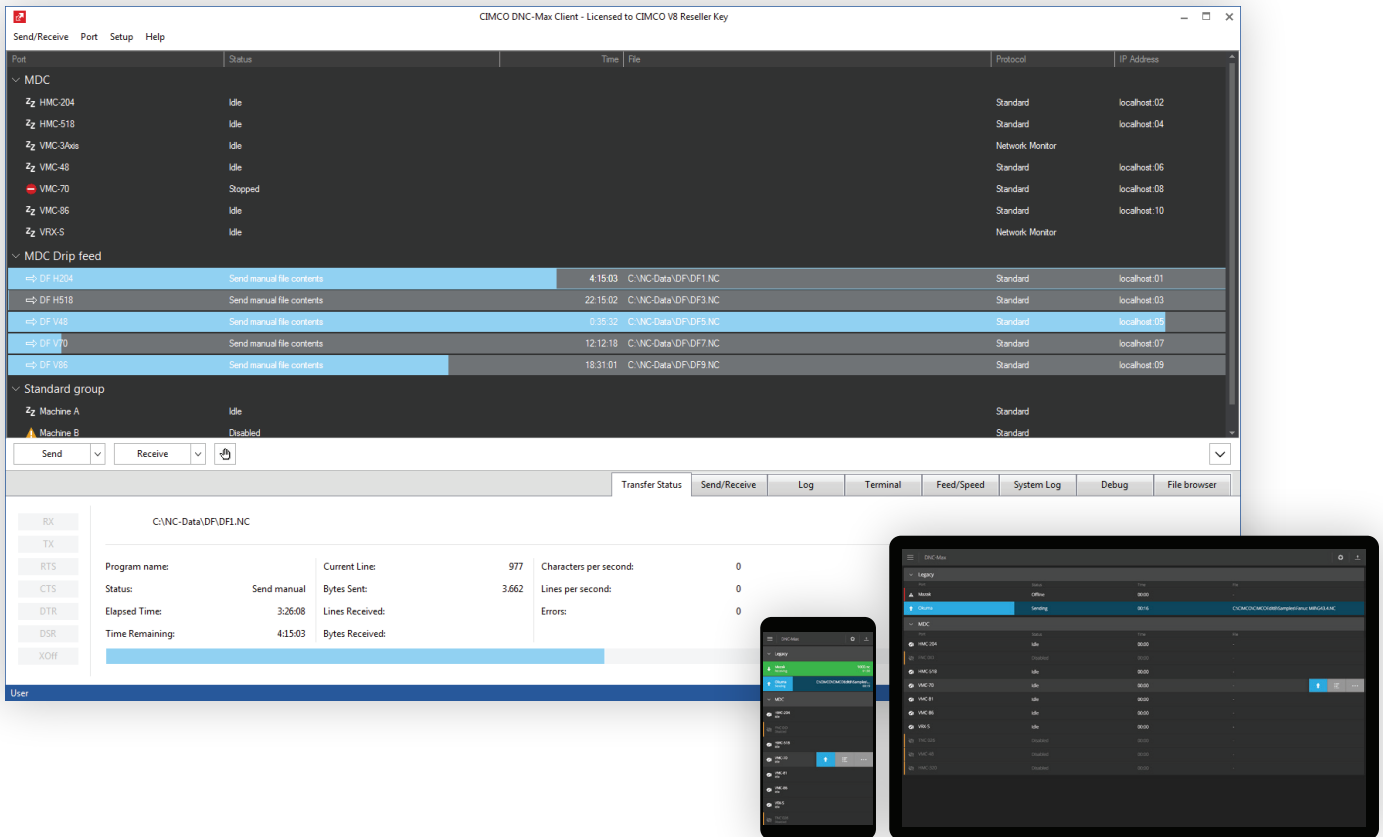


INTRODUCTION

What is CIMCO DNC-Max?

Provides full control over program transfers to all your manufacturing equipment from one central application

For over a decade CIMCO DNC-Max has been the leading DNC solution by which all others must be compared. From its best-in-class client/server architecture to its unmatched configurability and scalability, DNC-Max meets the requirement of both small shops and corporate enterprises with thousands of machines in multiple remote facilities.



BENEFITS

Why use CIMCO DNC-Max?



Network CNCs, PLCs & Robots

Network all your manufacturing equipment using industry standard hardware. Ethernet and WiFi device servers, traditional card based hardware, and existing legacy hardware.



Works with your files

Whether replacing an existing DNC system or setting up a new, the DNC application you choose must be compatible with your data. DNC-Max works with all your existing NC programs.



Access programs immediately

With DNC-Max there is no waiting. All your machines can download programs at the same time.



Download programs remotely

Reduce downtime from walking programs out to the shopfloor. Initiate downloads of programs directly from the CNC control, from a mobile device or Barcode reader.



Ease of use

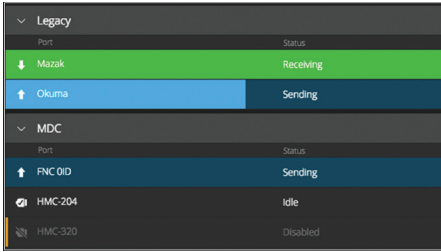
File transfers, port monitoring and system administration are all handled in a clean, intuitive client/server interface.

A scalable solution

DNC-Max can scale with your company's future needs such as expanding your system with manufacturing document management or machine data collection.

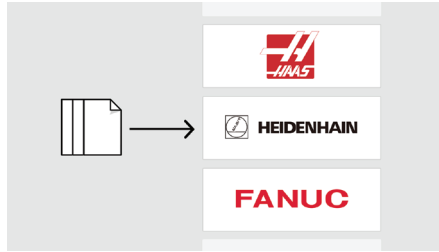
FEATURES

What is included?



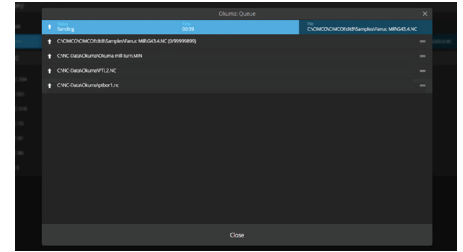
Ports, status and organization

Each port defines a machine connection and shows the current status of the port and machine. Organize ports in groups for optimal overview.



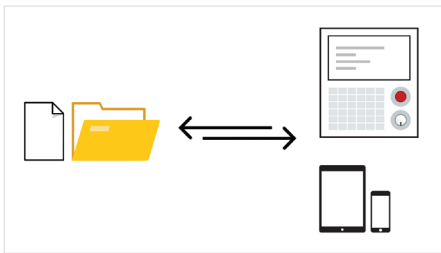
Network protocols

Standard and specialized network protocols for communication with most manufacturing equipment. Mazak, Deckel, Agie, Fagor, Brother, Modbus, and many more.



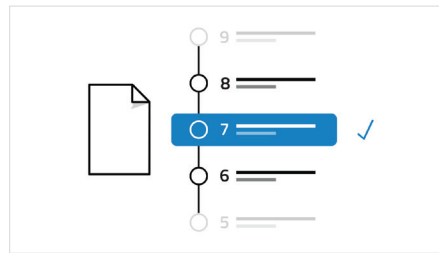
Send, receive and dripped

The 'Send Queue' ensures that files are transferred sequentially. Advanced options available for unlimited filesize dripped if supported by CNC.



Remote request

Request programs directly from the CNC control or using a mobile device and the DNC-Max Web Client. Supports DNC restart and file looping, directory support, directory prioritization, filters, wildcards, and more.



Versioning

Programs that are modified on the CNC control (or elsewhere) can be raised in version and stored in a quarantine area for review. Easily track changes and revert to previous versions.



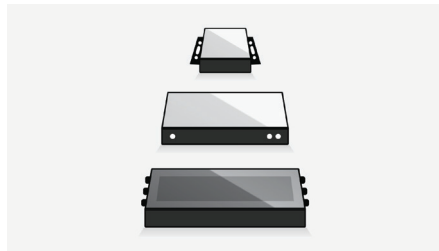
User access control

Control the level of access for users across the entire DNC-Max system. Limit configuration and control options to key personnel.



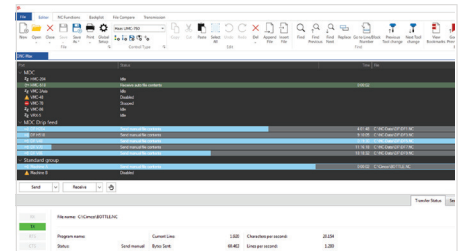
Logging and notifications

Real-time logging of DNC-Max system and machine activity. Auto-send status reports and notifications directly to CNC operators and key personnel.



CNC and hardware compatibility

Works with industry standard RS-232 serial hardware, Ethernet and Wireless serial device servers, traditional card based hardware, and existing legacy hardware.



Integration with CIMCO Edit

In addition to the stand-alone PC and Web Client, DNC-Max is also available as an integrated add-on for CIMCO Edit.

- ✓ Port configuration across servers
Manage multiple servers from DNC-Max across LAN, WAN, and Internet
- ✓ Predefined and custom port templates
Add custom ports or select from a large set of predefined connections
- ✓ FTP support
Communicate directly with machines that support Ethernet TCP/IP
- ✓ Parameter offsets
Offset parameters in your NC program before it is sent to the machine

AND MORE

www.cimco.com →

Visit our website to discover many more features, videos or to download our free, 30 day trial version of CIMCO DNC-Max.

&-0 &2 LV/D@DGLQJ GHYH@RSHURI VRIVZ DUH DQG VROXMRQV I RU&RP SXVMU
-QMMU LVMG 0 DQXIDFVXUQJ LQFOXGLQJ DGYDQFHG &1 & (GLURUV ' 1 & VRIVZ DUH
IRU UHDE@H &1 & FRP P XQLFDMRQ 0 DQXIDFVXUQJ ' DMD &R@FMRQ I RU
UHDOMP H P RQVRUQJ DQG DQD@VLV RI VKRS 5RRUSURGXFWYLVW DQG 0 DQXIDF
VXUQJ ' DMD 0 DQDJHP HQWRUP DQDJLQJ RUJ DQJ LQJ DQG VHFUXHD' WRUQJ
SURGXFWRQ UHDMWG GDMD

6LQFH &-0 &2 KDV KH@SHG FRP SDQLHV Z RU@Z LGH LP SURYH VKHLW
FRP SHMMYH HGJH EV SURYLGLQJ UHDE@H VRIVZ DUH DQG RXVMD@GLQJ RQ VMM
DVLMDQFH 2 XUQH@Z RUN RI &' &\$ 0 &1 & UHM@HUV DQG FRQV@D@QW KDYH
VR@P RUH VKDQ @FHQMV Z RU@Z LGH DQG Z H KR@J UHDAVSLGH LQ
FRQMD@RXV@D VXSSRUMLQJ DQG P HMDQJ RXUFXWRP HUV GHP DQGV EV GHYH@RSLQJ
LQMD@J HQMDQG FRP SHMMYH VROXMRQV

0 -85262)7 0 -85262)7.2))-&(0 -85262)7 (; &/ \$1' 27+(5 0 -85262)7 352' 8&76 \$5(5(' -67(5(' 75\$ (0 \$5. 6.2) 0 -85262)7 -1 &)857+(50 25(&-0 &2 0' 0' 2(6 127-4 &/8' (\$/-&(16()25
0 -85262)7.2))-&(-1 25' (5 72 23(1)-/6(; 3257(' -4 ; /6; 25 ; /6)250 \$7 \$/-&(16(2) 0 -85262)7 (; &/ 0 867%(385&+\$6(' 6(3\$5\$7(/<)-520 0 -85262)7 -1 &

&-0 &2 \$ 6
9(50 81' 6* \$' (\$
&23(1+\$*(1' '(10 \$5.

&-0 &2 \$0 (5-&\$6 // &
1 \$7/\$17-& \$9(67(
&2 &2 \$ %(\$&+)/

7(/
)\$;
(0 \$-/ LQIR# FLP FR FR
P

7(/
)\$;
(0 \$-/ LQIRX# FLP FR FRP

&-0 &2 +(\$' 48\$57(56 \$1' 0 \$-1 75\$-1-1')\$&-7<\$5(/2&\$7(' -1 7+(' \$1-6+ &\$3-7\$/
&23(1+\$*(1 7+-6-67+(%@6(2) 23(5\$7-2 1)25 7+(6\$/(6 \$1' 68332577(\$0 285 7(&+1-&\$/
6(59-&(67\$)) 75\$9(/6: 25'' : -(\$1' +\$6/2&\$/ 2))-&(6-1 6(/&7&28175-6

(8523(
\$8675-\$)-1/\$1' 1(7+(5/\$1' 6 6/29\$. -\$
%/\$586)5\$1&(1.25: \$< 6/29(1-\$
%(/'-80 *(50 \$1< 32/\$1' 63\$-4
%@/' \$5-\$ +81* \$5< 32578* \$/ 6: (' (1
852 \$7-\$ -6(/\$1' 520 \$1-\$ 6: -7=(5/\$1'
&=&+ -65\$(/ 5866-\$ 785. (<
5(38%/-& -7\$/< 6&27/\$1' 8. 5\$-4(
' (10 \$5. /\$79-\$ 6(5%\$ \$1' 0 217(1(* 52 81-7(' .-1** 20
(6721-\$

6287+ 1257+ \$0 (5-&\$ \$6-\$ 0-' / ((\$67 2&(\$1-\$
%\$=-/ 86\$ \$8675\$/\$- 6-1* \$325(
8\$1\$' \$ 9(1(=8(/\$ &+-\$ 6287+ \$)5-\$&
&+-(+21' .21* 6287+ .25(\$
82/20 %\$ -1' -\$ 7\$- \$1
8267\$ 5-\$& -1' 21(6-\$ 7+\$-\$1'
(88\$' 25 -\$3\$1 81-7(' \$\$\$%
0 (; -&2 0 \$/\$-6-\$ (0 -5\$7(69-71 \$0
3(58 1(: =(\$/\$1'

&-0 &2 \$87+25=-(' 5(6// (5

8)' , 83; 2 48(08(
&YR6SEH8VMI \
7NRKETSU
8IP
) QEW NRJSS X GLXS[R GSQ VK
; I FVM [[[X GLXS[R GSQ VK

0 RUH LQIRUP DMRQ DW
ZZZ FLP FR FRP

: DMRK RXUSURGXFWYLVGHRV DW
FLP FRYLGR

) R@RZ RQ) DFERRN
FLP FR

) R@RZ RQ/ LQNHG-Q
FRP SDQJ FLP FR DV

<RXU3DU@HULQ 6LQJDSRLH -QGRQHMD 7KDL@DQG 9LHV@DP 0 \ DQP DU